



GENERAL SPECIFICATION

Port of Registry Flag Year Delivered Hull No Builder Designer Classification Notation	: Majuro : Marshall Islands : 2014 : XSI487K : Xiamen Shipbuilding Industry Co. Ltd. : Kiam Chuan Marine Pte. Ltd. : American Bureau Of Shipping : ABS, + A1, FFV1, OSR-C1, Offshore Support Vessel, SPS, Supply-HNLS, (E), +AMS, +ACCU + DPS-2	ACCOMMODATION		PROPULSION SYSTEM	
		1 Man Cabin x 6	: 6	Main Engine	: 2 x 3000 BHP , Diesel engine @
		2 Men Cabin x 22	: 44	(Niigata)	750 rpm c/w Reduction gearbox
		Total Persons On Board	: 50	Propeller	: 2 x FPP, 2.7 m Dia @ 4-bladed, 360' azimuth with Kort Nozzle
		Hospital Room	: 1 Bed	Bow Thruster	: 2 x 10 Tons, CPP (650 kW E. Motor)
[FULLY AIR - CONDITIONED]					
PROPULSION PERFORMANCE					
		Maximum Speed		: 13.0 Knots (approx.) @ 100% MCR	
		Economic Speed		12.1 Knots (approx.) @ 75% MCR	

PRINCIPAL PARTICULARS		ANCHOR MOORING SYSTEM		ELECTRIC POWER GENERATION	
Length Overall	: 75.00 M	Anchor Type	: High Holding Power Anchor	Main Generators	: 3 x 450 kW@415V/3Ph/50Hz
Breadth Moulded	: 17.25 M	Anchor Capacity	: 2 x 1980 kg	Emergency Generators	: 1 x 80 kW@415V/3Ph/50Hz
Depth Moulded	: 8.00 M	Anchor Chains	: 17 Shackles L, 46 mm Dia, U2 Gr	Shaft Alternators	: 2 x 1000 kW@415V/3Ph/50Hz
Summer Draft	: 6.60 M	DECK EQUIPMENT		DYNAMIC POSITIONNING SYSTEM	
Gross Tonnage	: 2955	Anchor Windlass and	: Electro Hydraulic System, Windlass	DP-2 System	: 1 set
Net Tonnage	: 908	Moorings Winch	with 13 Tons Duty Pull @ 15 m/min.	Maker	: Kongsberg
Deadweight (Summer Draft)	: 3277 Tons (approx.)			NAVIGATION & COMMUNICATION EQUIPMENT	
Free Deck Space	: 700 m ² (approx.)	Tugger Winch	: 2 x 10 Tons @ Electro. Hyd. Sys.	GPS	: 1 unit
Deck Strength	: 5.5 Tons/m ²	Capstan	: 2 x 10 Tons @ Electro. Hyd. Sys.	Gyro Compass	: 3 units
SAFETY EQUIPMENT		Deck Crane	: 1 x 3 Tons (SWL) @10m outreach	Magnetic Compass	: 1 unit
Liferafts	: 6 x 25men			Radar (ARPA)	: 2 units (1 x X-Band, 1 x S-Band)
Rescue Boat	: 1 x 6 men c/w pivoting davit.	Reefer Point	: 1 x 63A, 415V/3Ph/50Hz	AIS	: 1 unit
Scrambling Net	: 2 set		5 x 32A, 415V/3Ph/50Hz	Echo Sounder	: 1 unit
Remarks: vessel's Life Saving Equipment are in accordance with SOLAS / LSA Code & Flag State requirements.			2 x 32A, 220V/1Ph/50Hz	Speed Log	: 1 unit
		DISCHARGE PUMPS CAPACITIES		Anemometer	: 3 units

FIRE FIGHTING & ANTI POLLUTION EQUIPMENT					
FiFi Classification	: FFV1	Fuel Oil (Cargo)	: 2 x 150 m ³ /hr @ 80 m head	BNWAS	: 1 set
Fire Pumps Capacity	: 2 x 1815 m ³ /hr @ 12 bar	Drill Water (Cargo)	: 1 x 100 m ³ /hr @ 80 m head	Auto Pilot	: 1 unit
Fire Monitor Capacity	: 2 x monitor capacity of 1200 m ³ /h water, 300 m ³ /h foam	Fresh Water (Cargo)	: 1 x 100 m ³ /hr @ 85 m head	CCTV	: 1 set
Oil Dispersant System	: 2 x 12m Outreach Veejet Nozzle	Liquid Mud/ Brine (Cargo)	: 2 x 75 m ³ /hr @ 90 m head	Search Light	: 3 units
Remarks: 1 x Fixed Fire-Fighting System (CO2) and 1 x Fixed Local Application System (Water Mist) to Machinery Space of Cat A, Fire Detection and Alarm System and Fire Fighting Equipment are in accordance with SOLAS/ FFS Code & Flag State Requirements.		Methanol/ Base Oil	: 1 x 70 m ³ /hr @ 70 m head	GMDSS Radio A3	: 1 complete set
		OTHER EQUIPMENT CAPACITIES		Navtex Receiver	: 1 unit
		Air Compressor for Bulk Sys.	: 2 x 1500 m ³ /h @ 6bar	Fleet Broadband	: 1 set
		Air Dryer for Bulk Sys.	: 2 x 1800 m ³ /h @ 7bar	VSAT	: 1 set
		Oily Water Separator	: 1 x 1m ³ /hr	Interior Com System	: 1 set
		Sewage Treatment	: 1 unit, suitable for 50 men	PA System	: 1 set
		Fresh Water Maker	: 2 x 10 Tons/ day	Sound Power Phone	: 1 set

Drill Water/ Water Ballast Tanks (m ³)	
1 DW / WB FP (C)	93.4
2 No.1 DW / WB DB (C)	83.4
3 No.2 DW / WB WG (P)	55.7
4 No.2 DW / WB WG (S)	27.6
5 No.3 DW / WB DB (C)	114.5
6 No.4 DW / WB WG (P)	72.8
7 No.4 DW / WB WG (S)	72.8
8 No.5 DW / WB DB (C)	135.6
9 No.6 DW / WB WG (P)	65.9
10 No.6 DW / WB WG (S)	65.9
11 No.7 DW / WB DB (C)	176.5
12 No.8 DW / WB WG (P)	113.3
13 No.8 DW / WB WG (S)	113.3
14 No.10 DW / WB WG (P)	73.6
15 No.10 DW / WB WG (S)	73.6
16 DW / WB AP (P)	41.1
17 DW / WB AP (S)	41.1
18 DW / WB AP (C)	80
TOTAL:	1500.1

Cement Tanks (m ³)	
1 Cement Tanks	3 x 59.4 + 1 x 49.5
TOTAL:	227.7

Fresh Water Tanks (m ³)	
1 No.1 FW WG (P)	59.7
2 No.1 FW WG (S)	59.7
3 No.2 FW WG (P)	134.6
4 No.2 FW WG (S)	134.6
5 No.3 FW WG (C)	65.9
6 No.4 FW WG (P)	46
7 No.4 FW WG (S)	46
TOTAL:	546.5

Fuel Oil Tanks (m ³)	
1 FO DAY (P)	24.3
2 FO DAY (S)	24.3
3 No.1 FO (C)	171.7
4 No.2 FO (P)	86.8
5 No.2 FO (S)	86.8
6 No.3 FO (P)	36.9
7 No.3 FO (S)	36.9
8 No.4 FO (P)	29.2
9 No.4 FO (S)	29.2
10 No.5 FO (P)	112.5
11 No.5 FO (S)	112.5
12 Over Flow (C)	23.3
TOTAL:	774.4

Mud/ Brine/ RO Tanks (m3)	
1 No.1 Mud/ Brine/ RO (P)	142.4
2 No.1 Mud/ Brine/ RO (S)	142.4
3 No.2 Mud/ Brine/ RO (P)	127.6
4 No.2 Mud/ Brine/ RO (S)	127.6
5 No.3 Mud/ Brine/ RO (P)	99.7
6 No.3 Mud/ Brine/ RO (S)	99.7
TOTAL:	739.4

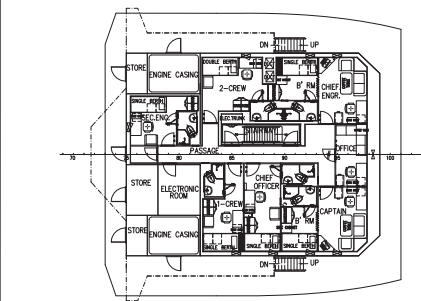
Base Oil/ Methanol/ FO Tank (m ³)	
1 BO/ Methanol/FO (C)	148.2
TOTAL:	148.2

Other Tanks (m ³)	
1 Foam (P)	12.7
2 Detergent (S)	12.7
3 HYD. Oil (P)	7
4 LUB. Oil (P)	5.9
5 LUB. Oil (S)	12.9
6 Dirty Oil (P)	16.4
7 Bilge Holding (S)	16.4
8 Sewage Holding (S)	28.1
9 EGEN FO DAY	0.55
TOTAL:	112.65

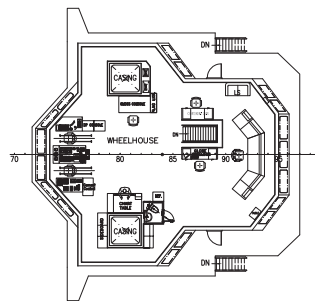
[ALL INFORMATION ARE BELIEVED TO BE ACCURATE AT THE TIME OF PRINTING]

THIS TECHNICAL BRIEF SPECIFICATION IS SUBJECT TO CHANGE WITHOUT NOTICE

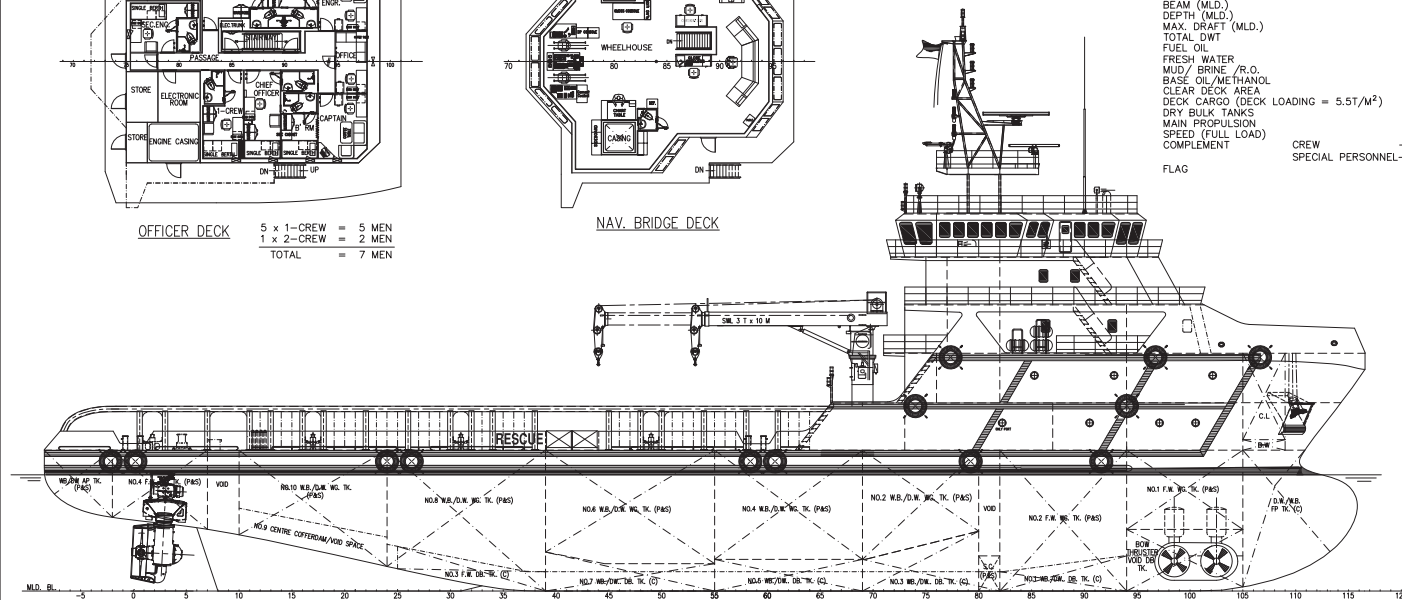
UPDATED :6-Sep-2016



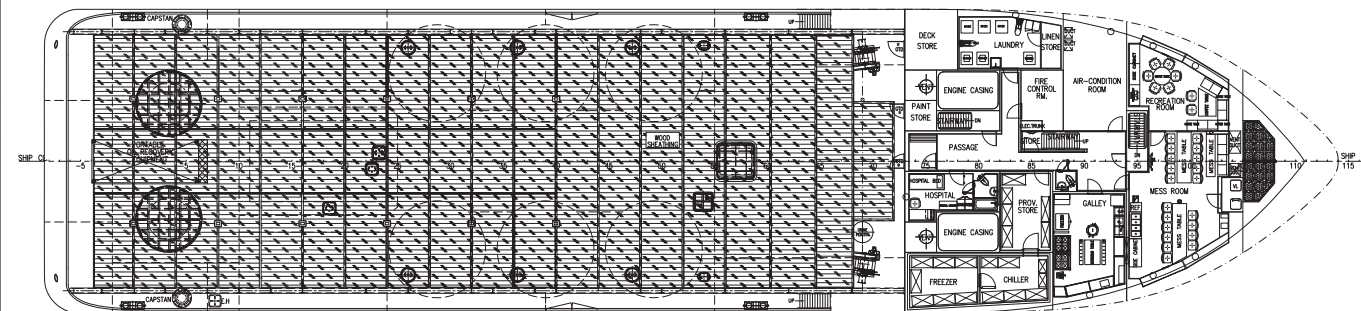
OFFICER DECK
5 x 1-CREW = 5 MEN
1 x 2-CREW = 2 MEN
TOTAL = 7 MEN



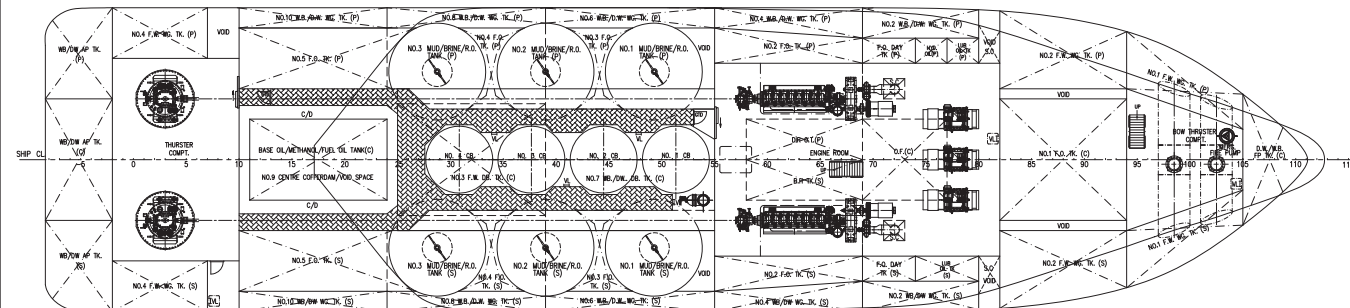
NAV. BRIDGE DECK



OUTBOARD PROFILE



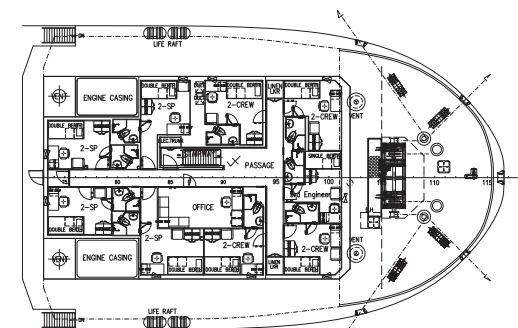
MAIN DECK PLAN



BELOW DECK PLAN

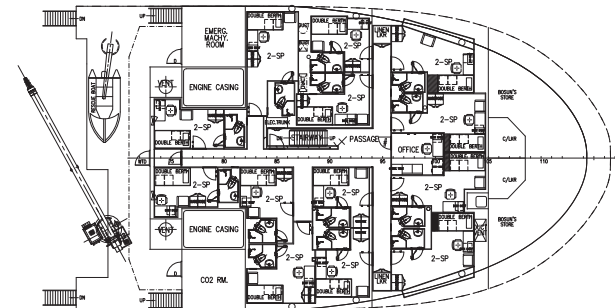
PRINCIPAL DIMENSIONS

LENGTH (O.A.)	75,000 M
LENGTH (W.L.)	72,515 M
LENGTH (B.P.)	67,468 M
BEAM (M.L.D.)	17,250 M
DEPTH (M.L.D.)	8,000 M
MAX. DRAFT (M.L.D.)	6,600 M
TOTAL DWT	3300 TONS
FUEL OIL	750 M³
FRESH WATER	550 M³
MUD/BRINE/R.O.	739.4 M³
BASE OIL/METHANOL	148.2 M³
CLEAR DECK AREA	700 M²
DECK CARGO (DECK LOADING = 5.5T/M²)	1200 TONS(A.E.-FR.72)
DRY BULK TANKS	226 M³
MAIN PROPULSION	2 X 3000 PS
SPEED (FULL LOAD)	12.5 KNOTS
COMPLEMENT	16 MEN
CREW	34 MEN
SPECIAL PERSONNEL	Marshall Islands
FLAG	



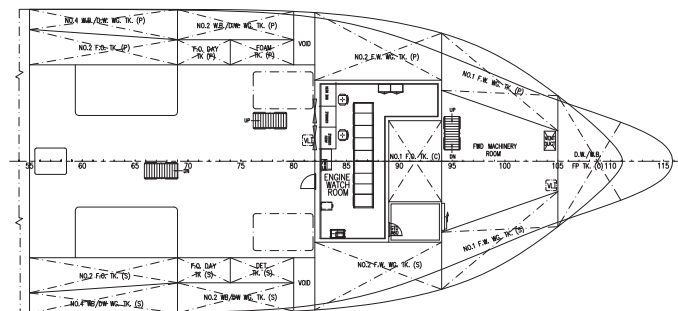
UPPER FORECASTLE DECK PLAN

1 x 1-CREW = 1 MEN
4 x 2-CREW = 8 MEN
4 x 2-SP = 8 MEN
TOTAL = 17 MEN



FORECASTLE DECK PLAN

13 x 2-SP = 26 MEN
TOTAL = 26 MEN



TWEEN DECK PLAN

NOTE:-

- PLEASE NOTE THAT A STAIRWAY WHICH IS ENCLOSED ONLY AT ONE LEVEL SHALL BE REGARDED AS PART OF THE SPACE FROM WHICH IT IS NOT SEPARATED BY A FIRE DOOR.
- IF SELF-CLOSING DOORS TO BE PROVIDED, AND APPROPRIATE ARRANGEMENTS TO AVOID INJURY TO PERSONS IN THE CORRIDOR SHALL BE CONSIDERED.
- A TOE BOARD OR KICK PLATE BE INSTALLED ON THE BRIDGE WING DECK BELOW THE LOWER RAIL COURSE.
- DECK AREA FOR HANDLING OIL AND OIL-BASED LIQUID ARE TO BE PROVIDED WITH A COAMING OF AT LEAST 150MM HEIGHT AROUND ALL PUMPS, TRANSFER FLANGE, CONNECTIONS AND OTHER EQUIPMENT WHERE LEAKAGE MAY OCCUR. COAMING FOR RECOVERY OIL MAY BE OF REMOVABLE TYPE.
- BALLAST WATER TANKS/DRILLING WATER TANKS ARE NOT DEDICATED SEAWATER BALLAST TANKS.
- THE ACCESS DOORS TO DECK STORE & PAINT STORE ARE TO BE OF SELF-CLOSING GAS-TIGHT WITHOUT HOLD-BACK DEVICES, SECURED AND FITTED WITH SIGNS INDICATING THAT THE ROOMS ARE NOT TO BE ENTERED AND THE DOORS ARE TO REMAIN CLOSED DURING OIL RECOVERY OPERATIONS.
- THE ACCESS DOORS TO ACCOMMODATION SPACE ON THE MAIN DECK ARE TO BE WATER TIGHT WITHOUT HOLD-BACK DEVICES, SECURED AND REMAINING CLOSED DURING OIL RECOVERY OPERATIONS. THE WARNING SIGN TO THE ABOVE EFFECT IS TO BE FITTED ON THE DOOR.
- 2 ROUTES ARE PROVIDED FROM THE LOWER PART OF THE ENGINE ROOM AS MEANS OF ESCAPE.

KCM/Q663(A)-G1		75M PLATFORM SUPPLY VESSEL	HULL NO.
		75米 平台供应船	船号 487K
DESIGNED 设计	KCM	FINAL DRAWING 完工图	
CHECKED 校核	刘利峰	SCALE 比例 1:150	
APPROVED 审核	阮生华	WEIGHT 重量	
CHK OF STAND 标准	刘利峰	AREA 面积	
APPROVED 审核	黄健壮	PAGE 页数 1/1	
DATE 日期	2014.1.20		
KHAM CHUAN MARINE PTE LTD		XIAMEN SHIPBUILDING INDUSTRY CO.,LTD	
健全海事私人有限公司		厦门船舶重工股份有限公司	